

# Health Eye Care Presentation

Seth Kutch, Colby Siegley, Eric Hood, Christina Marvin, Tori Kohl

# Vocabulary

Lacrimal gland- the gland that secretes tears into ducts that empty into the eye.

Sclera-the tough, white part of the eye.

Cornea-a transparent tissue that bends and focuses light before it enters the lens.

Choroid-a thin structure that lines the inside of the sclera.

Retina-the light sensitive membrane on which images are cast by the cornea.

# Videos

Go to :

[https://www.youtube.com/watch?  
v=nbwPPcwknPU](https://www.youtube.com/watch?v=nbwPPcwknPU)

# Function of Parts

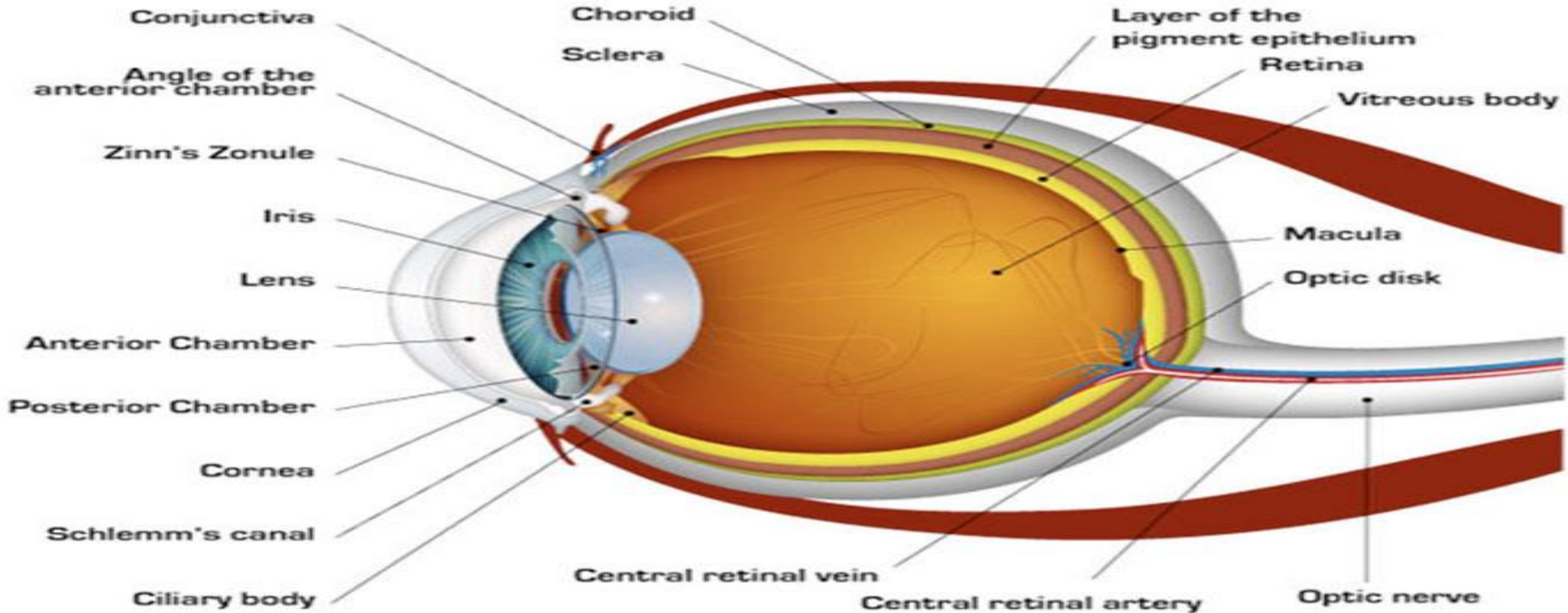


Diagram of the Eye